

CR and DR Multi-mission Package

SCANX SCOUT - CR X-ray with Flexible Image Plates

- **Flexible plates** - True ground level imaging. Slide plates into tight areas and wrap around objects
- **Fast grab and go** - no cables or wi-fi to connect - so no unexpected drop outs at critical moments
- **Combine multiple plates** in grid format to x-ray large targets



SCANSILC - Lightweight Ruggedised DR X-ray Detectors

- **Remote control** of your x-ray source without reapproach using any Scansilc DR x-ray panel
- **Rapid Grab-and-Go** mode with no trailing cables, or interface control box
- **Reduces time on target** - Minimal components and setup -get the job done quickly and efficiently
- **Reliable when it counts** - Rugged, Resilient, Dust, Dirt and Water Resistant in all conditions



**SCANX
SCOUT**

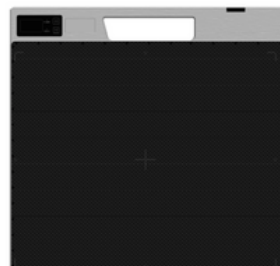
Select your Scansilc Panel



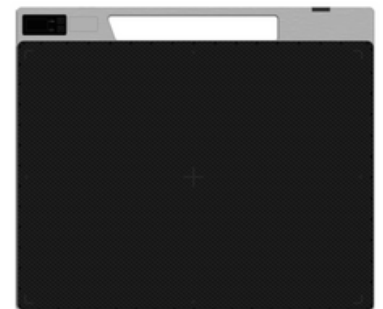
**Scansilc
1824**



**Scansilc
2430**



**Scansilc
3643**



**Scansilc
4357**

ONE CONTROLLER RUNS BOTH CR AND DR PLATES

Scan X Scout: Portable X-ray System



Overview

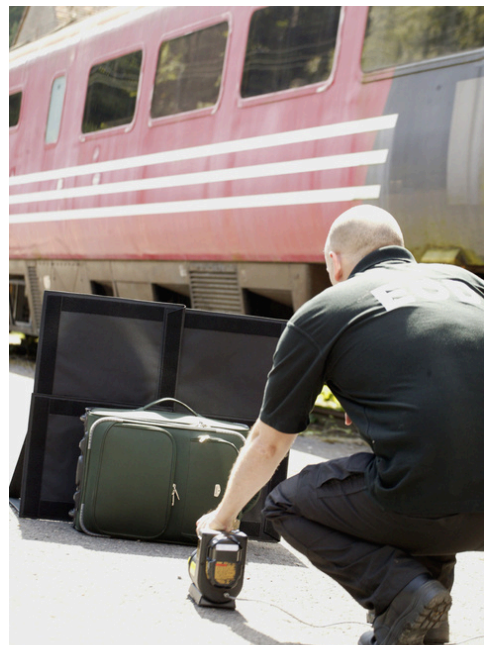
ScanX Scout Portable Digital X-ray system with re-usable flexible film plates.

ScanX Scout is a high performance portable digital X-ray system combining high sensitivity flexible film plates, a rugged battery powered image plate reader and a laptop. The Scout package provide you with detailed forensic level X-ray inspection across the full spectrum of security and defence applications.

ScanX Scout image plates are very thin and flexible for easy access into confined areas and or wrapping around objects of interest. The image plates are available in a range of sizes to suit the task you're working on and can be used individually or mounted in multiple combinations to investigate larger objects.

Highlighted Features

- Fast Set up and X-ray Image Acquisition
- Large Range of Image Plate Sizes
- Electronic free x-ray plates - no user setup
- Battery Operation
- High Resolution Images
- Operates with both pulsed and CP x-ray sources
- Light and easy-to-handle Image Plates



Technical Information

Image Processor and Image Plates



Scout Processor	
Dimensions	39 [w] x 44.5 [l] x 35 [h] cm
Weight	21 kg with battery, 19.5 kg without
Resolution*	Vertical: 3.8 to 5.0 lp/mm Horizontal: 3.8 to 7.0 lp/mm
Pixel Pitch	300 - 100 microns
Laser Class	1, compliance with FDA HHS 21 CF1040.10 and IEC 60825-1
Data Transfer	USB
Power	Mains or 4 hour battery [24DC]

X-ray Image Plates*	
Standard Sizes	35 x 43 cm [14 x 17"] [Standard]
	25 x 30 cm [10 x 12"] [Medium]
	20 x 25 cm [8 x 10"] [Small]
Longer Length	35 x 90 cm [14 x 36"] 35 x 130 cm [14 x 51"]
Plate Accessories	Flexible Cassettes, Protective Covers, Rigid Carbon, Fibre Cassettes, FlexRay Cassettes

*ScanX Scout is compatible with standard and high resolution x-ray image plates. Image resolution achieved will vary according to the type of image plate used.

*NSN: 6350-99-236-1928

Flexray Image Plate Mounting System

The Flexray Image Plate Mounting system enables the examination of large objects by combining multiple image plates in a variety of configurations. The ability to check large surface areas with a single X-ray shot reduces the time spent in the target area and ultimately time spent on task. Standard size plates can be used to combine from two to nine plates together. Longer length plates can be used in combinations of two or three together enabling over 1 m sq. to be checked using a single X-ray exposure.

Flexray image plate kits include stiffened canvas image plate cassettes, Velcro fastenings, guy line, eyelets, carabiners and suction cups giving you the flexibility to free-stand or hang image plates behind the target or to directly attach them to the area of interest.



Compact Scansilc DR X-ray Panels

SCANSILC 1824

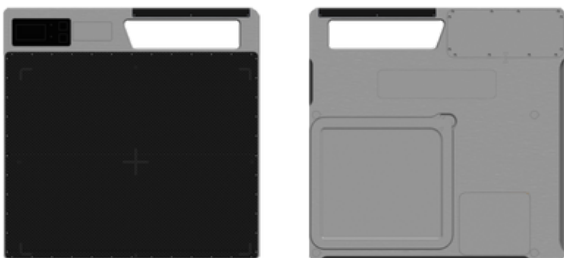
Designed for users that need to take high quality x-ray images but don't want to carry around a bulky pellicase or backpack. Works in a back-to-back format with a tablet or can also link to a larger laptop.

Scansilc 1824	
Image Area	175 x 233 mm
Pixel Pitch	76 micron
Resolution	6.5 lp/mm
Physical Dimension	265 x 215 x 21.8 mm inc handle
Weight	1.7 kg
Environmental Protection	IP67 [Dust and Water Resistance]
Drop Test	1 m on all 4 corners



SCANSILC 2430

A robust and compact x-ray panel in a convenient 24 x 30cm format. The panel is designed for security and EOD operators, and can be controlled and operated remotely from the ICP on a range of cable lengths or closer to the target in pre-cabled back-to-back mode.



Scansilc 1824	
Image Area	233 x 291 mm
Pixel Pitch	76 micron
Resolution	6.5 lp/mm
Physical Dimension	325 x 318 x 20 mm inc handle
Weight	2.0 kg
Environmental Protection	IP67 [Dust and Water Resistance]
Drop Test	1 m on all 4 corners

Large Format Scansilc DR X-ray Panels

SCANSILC 3643

This 36 x 43 format allows operators to investigate larger targets with the additional benefit of dual battery power. Doubles your time of performance in the field producing high-quality x-ray images

	Scansilc 3643
Image Area	353 x 430 mm
Pixel Pitch	100 micron
Resolution	5 lp/mm
Physical Dimension	465 x 435.5 x 20 mm
Weight	3.9 kg
Environmental Protection	IP67 [Dust and Water Resistance]
Drop Test	1 m on all 4 corners



SCANSILC 4357

Designed to be large enough to check hand-carried baggage, this 43 x 57cm panel incorporates the same performance features of the Scansilc 3643 with a larger imaging area.



	Scansilc 4357
Image Area	430 x 573 mm
Pixel Pitch	140 micron
Resolution	3.5 lp/mm
Physical Dimension	609.8 x 520.2 x 20 mm
Weight	< 6.2 kg
Environmental Protection	IP67 [Dust and Water Resistance]
Drop Test	1 m on all 4 corners

Portable X-ray Generators

Standard X-ray Generator Options



XR150



XR200



XRS3



XRS4

	XR150	XR200	XRS3	XRS4
Applications	Special Forces, Light Duty Applications	Police, General Security, Postal Investigation	Military, Counter IED, UXO inspection	Military, UXO Inspection
Dimensions [cm]	23.06 [L] 7.7 [W] 10.34 [H]	27.15 [L] 10.82 [w] 14.81 [H]	39.17 [L] 12.19 [W] 17.91 [H]	48.92 [L] 12.19 [W] 17.91 [H]
Weight	2.58 kg with battery	4.8 kg with battery	5.4 kg with battery	8.3 kg with battery

*Note: Scout is also compatible with various CP x-ray sources

Controller / viewer options

X-ray systems are supplied with a high performance laptop or tablet running Windows Professional 64 bit. Minimum spec: Intel Dual Core Processor, 500 GB-1 TB HardDrive, 4-8 GB Memory.

Other brand name variants and ruggedised MilSpec models with foreign keyboard are available



Viewer Options



Cases



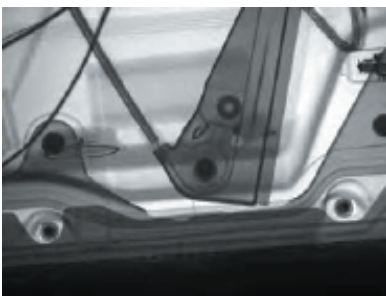
**Viewer
Options**



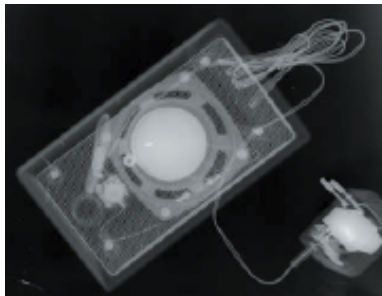
**EOD / CMD
Work**



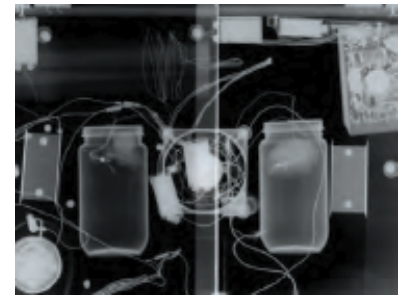
**IED and Weapons
Investigation**



**Vehicle
Inspection**



**TSCM and
Forensics**



**Stitch Multiple
Images Together**

*Note: Resolution of the ScanX Scout is dependent on type of x-ray generator, operating mode and specific imaging plate type used.

Controller / viewer options

X-ray Generator selection	Digital Zoom	Rotate, Flip and Mirror image	Annotations
X-ray pulse setting	Vocal annotation	3D [Emboss] Image	Histogram Equilisation
X-ray pulse Activation	Email option	Sharpening	Histocontrast
X-ray Firing Delay	Battery Monitor	Smoothing	Overlay
Password Controlled Safety Timeout	User login	Edge Enhancement, Find Edges	Copy/paste
Accumulation of Pulses [Summing]	Print	One click image optimisation	Multiple Undo, Image Restore
Audible and Visual Warning during X-ray Activation	On-Screen Help	Brightness and Contrast	Measure [multiple units]
Incident Reference Creation	Image Tiling	Gamma Correction/Stretch	Calibrate Measurements
Visual database of X-ray images including name, date, category, place, file name	Multiple Zoom including zoom thumbnail window	Import/Export Images	Image Stitching & Cropping
Back up database	Inverse [polarity] image	Shaped Regions	Grid Overlay
Query and Sort in database	Pseudo Colour Images	Select Region	Save to file or removable device in windows formats - jpg, bmp, tif, png
Compact Database	Sub-image	Annotate Images, Save	Foreign language options